

Importing SRP (IDEX Online) list to Sarin Applications - Product Note04

Diamond SRP is new diamond price list published by IDEX Online (<http://www.idexonline.com/MSRP.asp>). The price list presents a retail price recommendation for a diamond based on each of the 4Cs – Cut, Carat, Color and Clarity. The list is based on the high-end of retail prices currently in the market place, therefore allowing enough room for all business models.

In order to support existing customers, Sarin has released a conversion tool. The tool converts SRP format (downloaded from IDEX Online website) to Sarin price list format.

The converted format is applicable to the following applications / versions:


1. Advisor 3.x – 4.x
2. Instructor 1.x
3. DiaVision 5.x (BETA version)

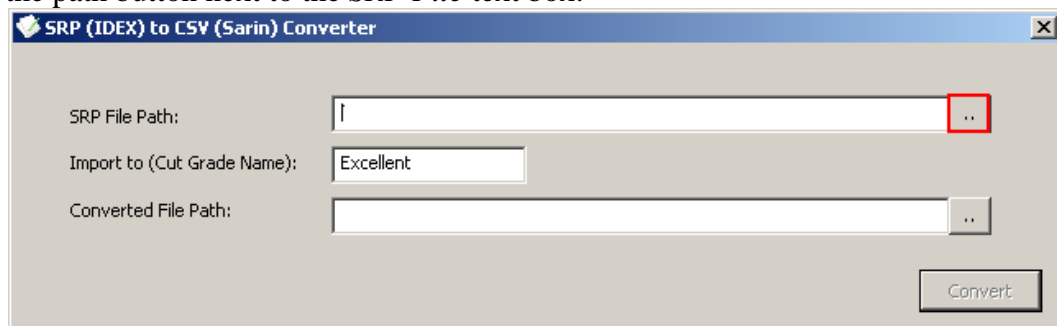
Future versions of Sarin's products will support an embedded importing capability of SRP list!

Converting & Importing Instructions:

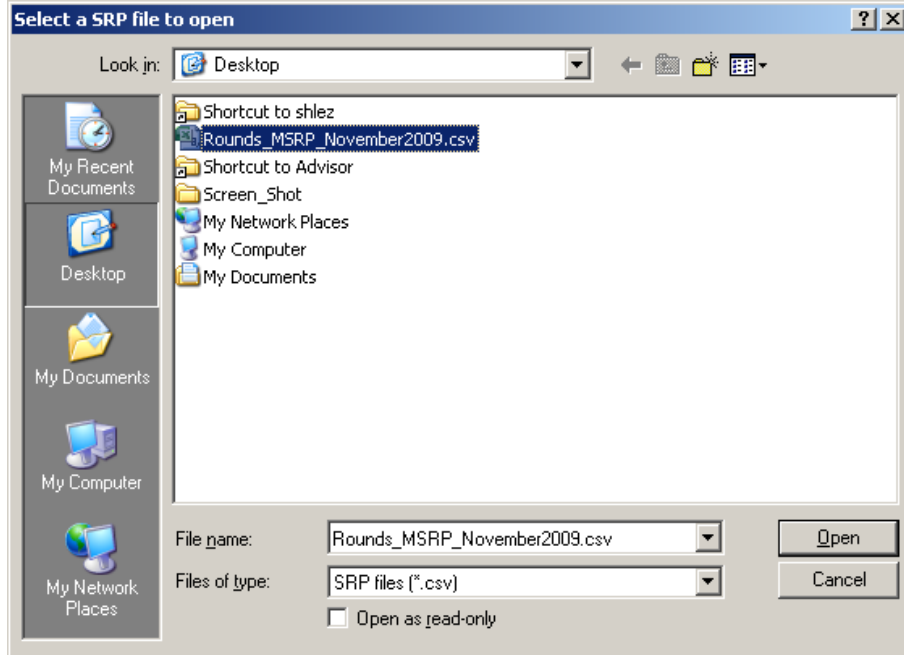
Converting

1. Download SRPConvert.exe from Sarin WEB site download page (www.sarin.com/downloads/SRPConvert.exe).
2. Download the relevant price lists from IDEX Online WEB site (<http://www.idexonline.com/MSRP.asp>).

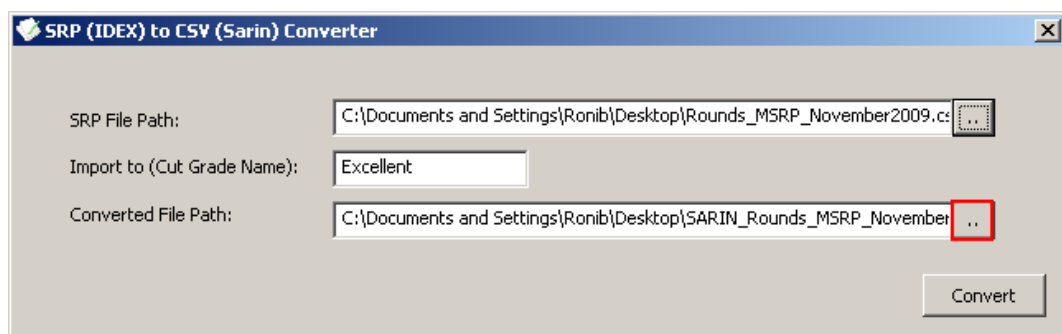
3. Click on the *SRPConvert* Icon ( SRPConvert.exe
2,448 KB
SRPConvert Application).
4. Click on the path button next to the *SRP File* text box.



- In the load file dialog, select the location of the SRP list file (e.g. round shape price list).



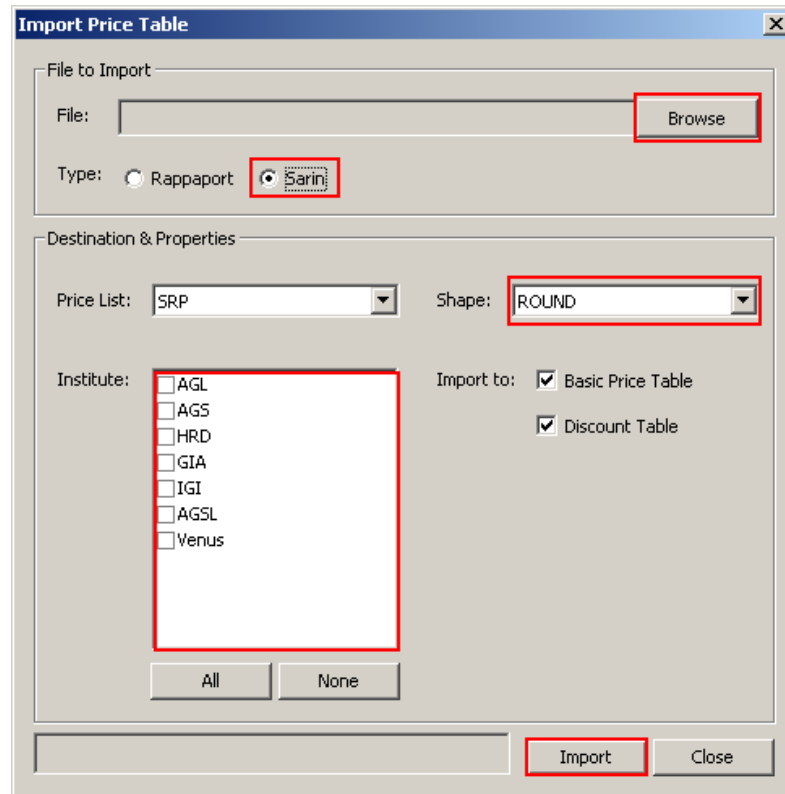
- Type the cut grade name you wish to add the price list to as it appears in Sarin's applications (e.g. Excellent).
- As default, the convertor will create the output file in the same directory of the input file. If you wish to modify the path or file name, click on the path button next to *Converted File Path* text box.



- Click on the Convert button in order to execute the conversion.

Importing to Sarin

- In Sarin application, go to the price list and select Advance and Import.
- In the import dialog, Click on the *browse* button and select the converted file.



11. Select the *Sarin* radio button in the type field.
12. Select the shape to which you wish to import the price list from the *shape* drop down list according.
13. Select the institutes to whom you wish to import the price list.

Note!

***The price list will only be imported to institutes
Which contain the exact (case sensitive)
Cut grade as defined in the conversion tool!***

14. Click on the import button to execute the operation
15. Use to Advance, Copy dialog to copy the price list from one shape/cut grade to all the desired shapes / cut grades (e.g. fancy price list from pear to all fancy shapes)

NOTE:

Please note that running this convertor requires any Sarin's red HASP plug to be connected to the PC.